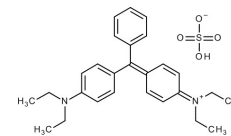




## LIGHT GREEN

|                                    |  |
|------------------------------------|--|
| <b>PRODUCT CODE</b>                | <b>R02982</b>  |
| <b>SYNONYMS</b>                    | --   |
| <b>C.I. NO.</b>                    | <b>42040</b>   |
| <b>CASR NO.</b>                    | --   |
| <b>ATOMIC OR MOLECULAR FORMULA</b> | <b>C<sub>27</sub>H<sub>34</sub>N<sub>2</sub>O<sub>4</sub>S</b> |
| <b>ATOMIC OR MOLECULAR WEIGHT</b>  | <b>482.65</b>  |
| <b>PROPERTIES</b>                  | --   |



### PARAMETER LIMIT

|  |                               |
|--|-------------------------------|
| Description  | A blue green coloured powder. |
| Solubility   | Soluble in water.             |
| Identification   | Passes test.                  |
| Dye content (titanomerty on dried substance)                                       | About 95.0%                   |
| Absorption maximum (in 50% ethanol)  | 630 ± 5 nm                    |
| Absorption ratio<br>(A <sub>λ max - 15 nm</sub> )<br>(A <sub>λ max + 15 nm</sub> ) | 0.84 - 1.14                   |
| Absorptivity (A1%, 1 cm λmax,<br>in 50% ethanol )                                  | Min.1050                      |
| Suitability for microscopy   | To pass the test.             |

### MAXIMUM LIMIT OF IMPURITIES

|                        |      |
|------------------------|------|
| Loss on drying (110°C) | 5.0% |
| Sulphated ash.         | 1.0% |

**Note(s) : Assay (if applicable) method mentioned.**

#### WARNING

**Hazard statements :** May cause respiratory irritation. Causes skin irritation. Causes serious eye irritation.

#### Precautionary statements

**Prevention:** Avoid breathing dust/fume/gas/mist/vapours/spray. Wash thoroughly after handling. Use only outdoors or in a well-ventilated area. Wear protective gloves/protective clothing/eye protection/face protection.

**Response:** IF INHALED: Remove to fresh air and keep at rest in a position comfortable for breathing. IF IN EYES: Rinse cautiously with water for several minutes. Remove contact lenses, if present and easy to do. Continue rinsing. Call a POISON CENTER or doctor/physician if you feel unwell. If eye irritation persists: Get medical advice/attention.

**Disposal:** Dissolve the chemical to be disposed, in water and allow it to run to waste, diluting with large quantities of water. The quantities greater than 10g should be dissolved in water and transferred to heavy metal waste drums for collection by specialist disposal company.

Hazard Pictogram(s) :



GHS07

IMDG Code : --  
UN No. : --  
IATA : --

Replace Date 1 April 2023

: Regd Office, 201, MM Nagar, Ahmedabad (Gujarat)

Email: rehsiffscientific@gmail.com, www.rehsiffscientific.com

